



**SAM** **SAM GROUP**

SAM(Sung An Machinery) CO., LTD  
33, Madogongdan-ro 6-gil, Mado-myeon,  
Hwaseong-si, Kyungki-do, Korea(ZIP:445-861)  
Tel : +82-31-491-9741  
Fax : +82-31-491-9745  
E-mail : sales@sungan.net

SAM NORTH AMERICA, LLC  
12 Harold Drive  
Fulton, NY 13069 / USA  
Tel : +1-315-575-3633  
Fax : +1-315-402-2169  
E-mail : info@sam-na.com

SAM EUROPE SRL  
Via Ruffino Allora 32, 15033  
Casale Monferrato / Italy  
Tel : +39-0142-21-3125  
Fax : +39-0142-21-3001  
E-mail : info@sam-eu.com

성안기계

# SUNG AN MACHINERY CO., LTD.

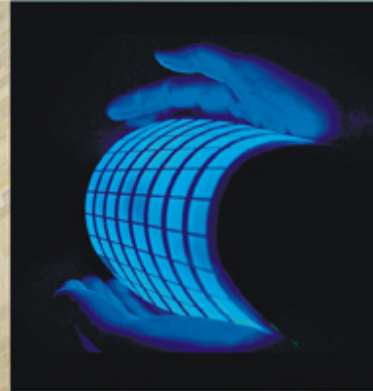
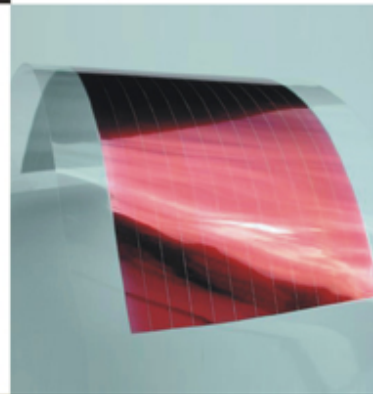


**SAM**(Sung An Machinery Co., Ltd.) is a world leader in the manufacture of web fed printing and converting machines. SAM's reputation is unsurpassed in the industry for its innovative product development, quality manufacturing, and total commitment to after sales service for over 50 years. Our success is a result of 100% commitment to our customer's needs and a willingness to work in partnership to exceed the desired results.

We boast an enviable client list of industry leaders bearing testimony to our long term relationships and the success of our projects.

## CONTENTS

- INTRODUCTION
- SAM IN MARKET
- ENGINEERING
- SOLUTION COATING
- EXTRUSION COATING & LAMINATING
- ROTOGRAVURE PRINTING
- OTHER SAM COMPANIES
- GLOBAL NETWORK



## SAM IN MARKET

SAM impacts our lives every day .....

In all probability, the machines used to manufacture the packaging for your daily use at the supermarket were made by SAM. Whether a detergent carton – biscuit wrapper – soup pouch – cheese packet – snack food pack or any of the other myriad of items on the supermarket shelves, SAM makes the machinery to produce the package.

Away from the supermarket and into the home, SAM technology is all around us. Decorative wallpapers are printed on SAM machines and, chances are, the tinting on your windows, the batteries used to power your cell phone, and even your appliances have a connection with SAM.

Even in the workplace, machines that produce pressure sensitive labels, silicon release paper, light reflective and masking tape, digital imaging systems or holograms form part of SAM's wide range of innovative machinery developments.

Our company is rapidly expanding, thanks to our valued clients who trust us to supply machinery that gives a sustainable advantage in competitive world markets.



# ENGINEERING



Our goal is..... TO BE THE BEST..... and the foundation of this philosophy rests with our commitment to invest in research and development, engineering technology, and the skills of our engineering personnel. The quality of our engineering resources is proven by the diversity of our existing range of successful installations. The world's leading manufacturers of printed and coated products are SAM's clients, some of whom operate over 30 SAM machines through their worldwide operations. They continue to purchase SAM machines because they demand the best.

Our new Offices and Manufacturing facility is located approximately 50 kilometers from Seoul, Korea. This "State of the Art" facility covers more than 12,000 square metres on a 20,000 square metre site. SAM is a Korean government certified Research and Development Centre used for the benefit of our customers to create new and better technology for the future.

Our engineering department utilizes the latest computer aided drafting software which is continually updated to deliver the most efficient and accurate manufacturing and assembly drawings. All machine parts are manufactured on site using modern computerized machine tools to ensure the concept of design is realized in the finished product through rigorous quality control procedures. SAM's new facility has the resources to assemble, test, and deliver over thirty lines of machinery a year. Our assembly hall is equipped with overhead cranes and material handling equipment with capacity to assemble SAM's extrusion coating lines, some of which are over one hundred metres long and ten metres high. It is little wonder that the printing and converting industry world-wide is choosing SAM.

# SOLUTION COATING

- Pressure / Thermal Sensitive Tapes
  - Adhesive Tapes (Single / Double Side)
  - Release Coater (Silicon)
  - Marking Tapes
  - Holograms
  - Hot Stamping Tapes
  - Lid Tapes
  - Hot Melts
- Optic Materials
  - Window Film
  - Prism / Diffusion Films
  - Polarizing Film
- Electronics
  - OPV Coater (Solar Cell)
  - RFID Coater (Antenna Chip)
  - Battery Coater
  - Multi Layers Condenser Line
- Pharmaceutical
  - PTP Coater
- High Barrier (PVDC) Film Coater
- Water Purification Filter Coater
- Al-Fin Coater (Air Conditioner)
- Multi Purposes Pilot Coater (R&D)

The applications for coating machines are endless. Whatever your coating requirement, SAM has the right machine for the job. If unable to offer a standard machine, SAM will design and build one to meet your most demanding specification. SAM also manufactures "Multi Purpose" test coating machines to enable our clients to develop their own products and carry out "in house" research and development. If you are thinking of coating...think of SAM.



# EXTRUSION COATING & LAMINATING

Whether your machine requirements are sustainable products with high barrier pouches, aseptic packaging, or PET on board, SAM will provide you the highest quality and cost effective solution. As your customer's product requirements change, SAM delivers extrusion lines over 3 M wide and production speeds over 600 MPM.

SAM will provide a solution and configure a new or up-graded machine to meet your current and future needs. For extrusion coating machinery, the best option is SAM with our "leading edge" technology.

## ■ Product Ranges

- Flexible Packages : Plastic Films/Paper/Al-Foil
- Board Papers : Aseptic Packages/Cup Stocks/Milk Cartons
- Woven / Non-Woven Materials

## ■ Extrusion Systems

- PE, PP, Acid Copolymers
- Mono / Co-Ex / Triple Extrusion

## ■ Line Configurations

- Single Extrusion Coating & Lamination (2~3 layers)
- Single Co-Extrusion Coating & Lamination (2~5 layers)
- Tandem Extrusion Coating & Lamination (2~7 layers)
- Triple Extrusion Coating & Lamination (2~7 layers)



# ROTOGRAVURE PRINTING

## ■ Product Ranges

- Flexible Package Printing
- Alu-foil Printing
- Board Paper Printing
- Decorative / Wood Grain Printing

## ■ In-line Lacquer Coating

- Over Lacquer
- Cold / Heat Seal Lacquer
- Anti-fog / Catalytic Lacquer

## ■ In-line Lamination

- Solvent Based Adhesive Lamination
- Water Based Lamination
- Solventless Adhesive Lamination

## ■ Straight / Double Side / Split Configuration

**SAM's** new generation of rotogravure machines operating at speeds over 500 meters per minute and offer features that benefit the printer that are unsurpassed in the market. Quick make ready, through automation of set up procedures, innovative inking systems, register pre-alignment, and the most advanced drive and control systems available, ensure start-up waste is minimal with the highest print quality and lowest cost of production.



# OTHER SAM COMPANIES



## SPEL (SUNGAN PRINTED ELECTRONICS LABORATORY)

specializes in the development of process and equipment for the printed electronics industry including OPV solar cell, OLED, lighting, smart ID, and others. The technology and know-how in designing and building roll to roll converting machinery for over 50 years has led us to a leading role in this promising industry. Our goal is focused on system integration to support the customers with coating / printing technology, high precision registration systems, and turnkey equipment for the printed electronics products industry.

### SPEL development system line-up :

- Ink matching system to coating & printing unit
- Pilot system



• Stage Slot Die Coater



• Rotary Screen Printer

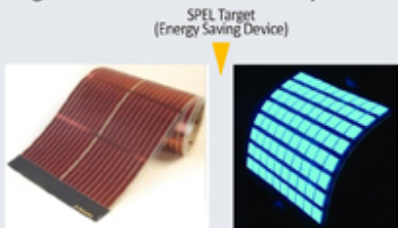


• Roll Slot Die Coater

### Application



### Organic device fabrication system TRM by Roll to Roll process



• OPV

• OLED Lighting



• Organic TFT



• OLED

Fine printing(<20 $\mu$ m)

Coating & simple printing(>20 $\mu$ m)



## N.C.T. (New Control Technology) Co., Ltd

designs and integrates drive and PLC / HMI control systems for all SAM machines. NCT's specialized process knowledge of web handling, tension control, unwinding, and winding ensure a successful project. N.C.T. is an intricate part of SAM's engineering resources providing the latest in HMI controls and drives technology.



• HMI control systems



• PLC



• PLC



• Drive



• Drive



• Drive



• Motor



• Motor



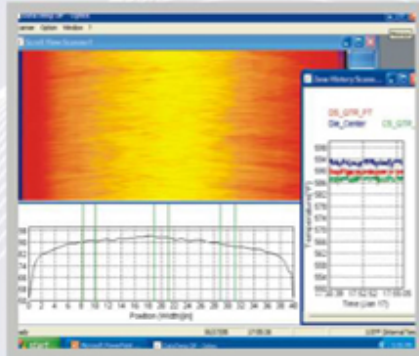
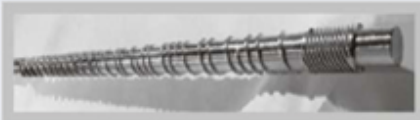
• Motor

# OTHER SAM COMPANIES



## SAM NORTH AMERICA LLC (SAM-NA, New York, U.S.A.)

provides technical process support, project management and service for Extrusion Coating & Laminating Machines, Cast Film Machines, and Screw & Extruder Design for global market. SAM-NA also specializes in Polymer Processing and various types of Screws & Extruder designs. Together, SAM-Korea and SAM-NA offers excellent engineering and best manufacturing practices with state-of-the-art products.



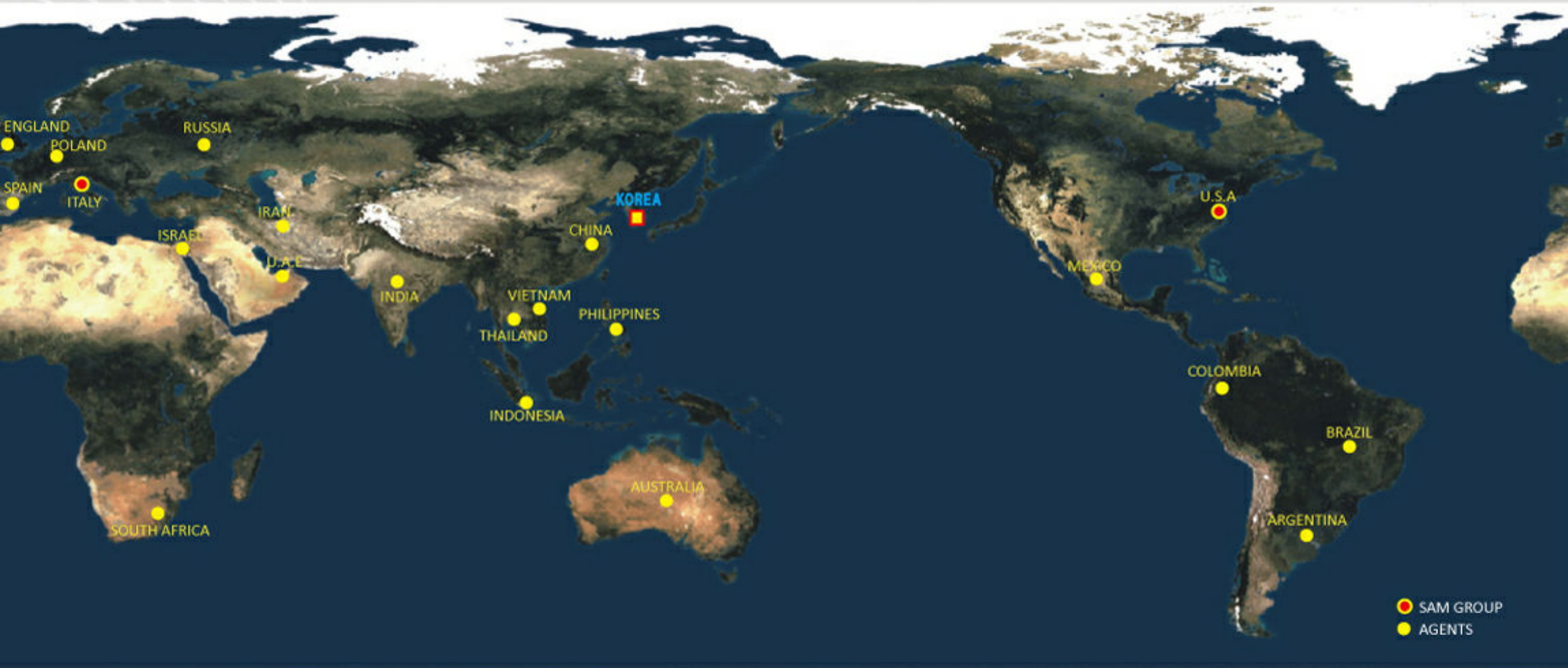
## SAM EUROPE Srl (SAM-EU, Italy)

provides technical process support, project management and service for Rotogravure Printing Presses, Extrusion Coating & Laminating Machines and Coating Machines for Film, Paper and Foil and Inline Coater for BOPET and BOPP Films. Together with SAM North America provides Cast Film Machines and Screw & Extruder Design for the global market and SAM, Korea Headquarter offers excellent engineering and best manufacturing practices on highest global market standards.



# GLOBAL NETWORK & INTERNATIONAL OPERATIONS

SAM's Global Customers : Over 600 installations in 26 countries



## SAM HAS MORE THAN **600** MACHINE INSTALLATIONS WORLD WIDE.

SAM machine installations operate throughout the world. To support our global growth, we are continuing to expand our worldwide sales and service network. We are fully aware of the production demands placed on our machines and the need to maintain their efficient operation. When you install a SAM machine our reputation is on the line. Our experienced technical personnel are call 24/7 to support and service your SAM machine. Industry leaders choose SAM!

To better service and support our global customer base, SAM established SAM North America LLC in the United States (2010) and SAM Europe Srl in Italy (2013). We assure you the SAM Group will be a distinguished supplier of Coating Machines, Extrusion Coating Machines, Gravure and Flexo Printing Machines.