

**CE 1000 / 1560**

**TRAY FORMING MACHINES**



**HS** HEIBER +  
SCHRÖDER

Made in Germany

# WHERE FLEXIBILITY MEETS PERFORMANCE

## **1 TO 4 LANE PRODUCTION**

*up to 48,000 perfectly formed trays every hour*

## **CHOICE OF GLUE APPLICATION SYSTEMS: ROTARY STENCIL OR BOTTOM / TOP MOUNTED GLUE GUNS**

*unlimited flexibility*

## **PROCESSOR CONTROLLED BLANK FEEDER WITH TEACH-IN FUNCTION**

*quick and easy set-up using a single blank*

## **FLEXTOWER WITH UNIQUE SPINDLE ADJUSTMENT**

*quick set-up and easy fine tuning on the fly*

## **PREPARATION JIG FOR OFF-MACHINE SET-UP OF NEW FORMATS (OPTIONAL)**

*reduced downtime and increased productivity*

## **PLUG-IN/PULL-OUT FIXTOWERS (OPTIONAL)**

*shorter changeovers and reduced waste*

## **PERFECT, SERVO-DRIVEN, PUSHER MOTION, READY PROGRAMMED FOR VARIOUS TRAY STYLES AND FORMATS**

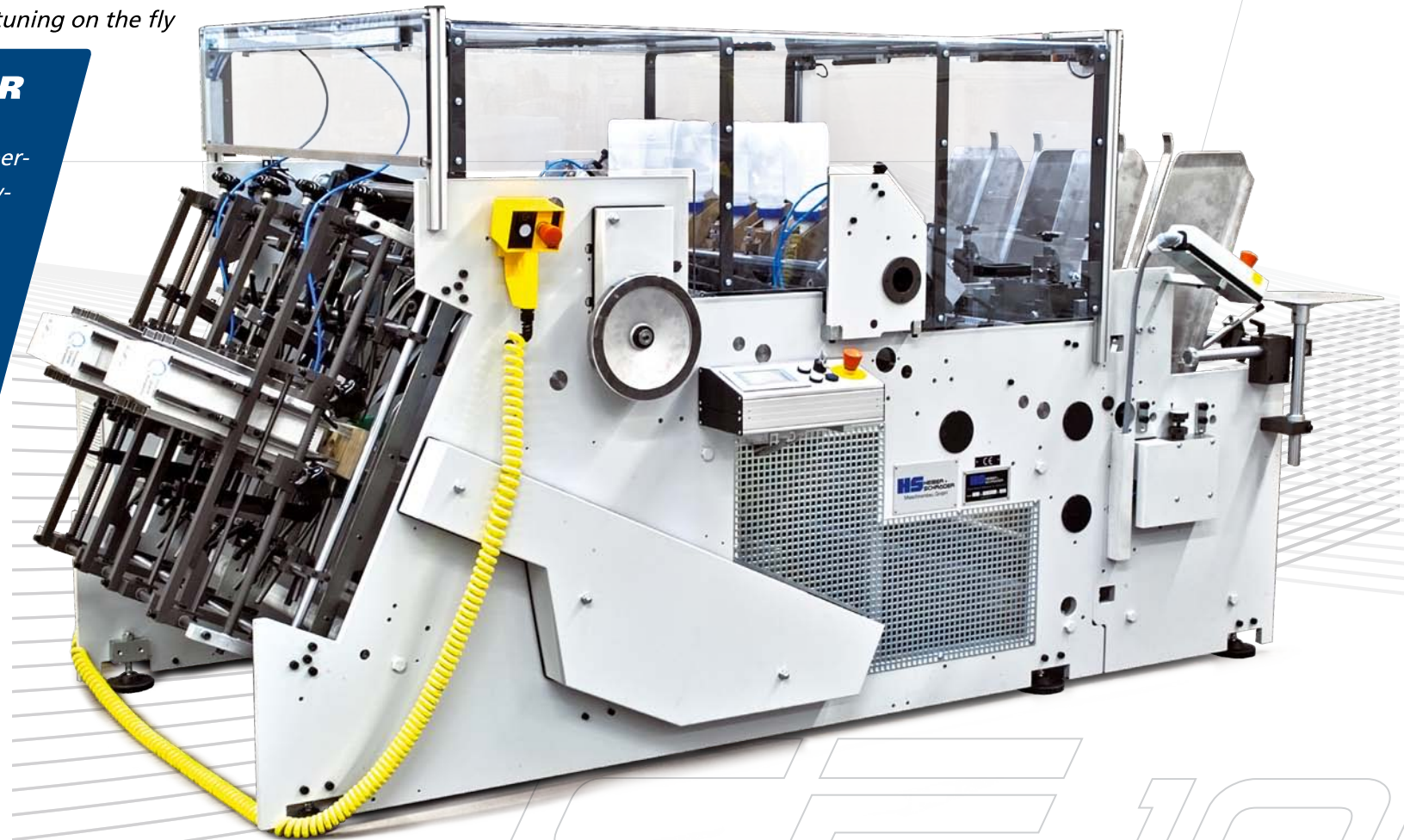
*higher output, better product quality and reduced waste*

## **SET-UP DATA STORAGE**

## **HEIBER + SCHRÖDER MACHINES**

*deliver the ideal combination of perfect tray forming, superb productivity, and unbeatable ease of use.*

*Each CE machine gives you the opportunity to create a wide range of products, while our clever optional equipment allows you to diversify into specialist markets or produce standard products with even more efficiency.*

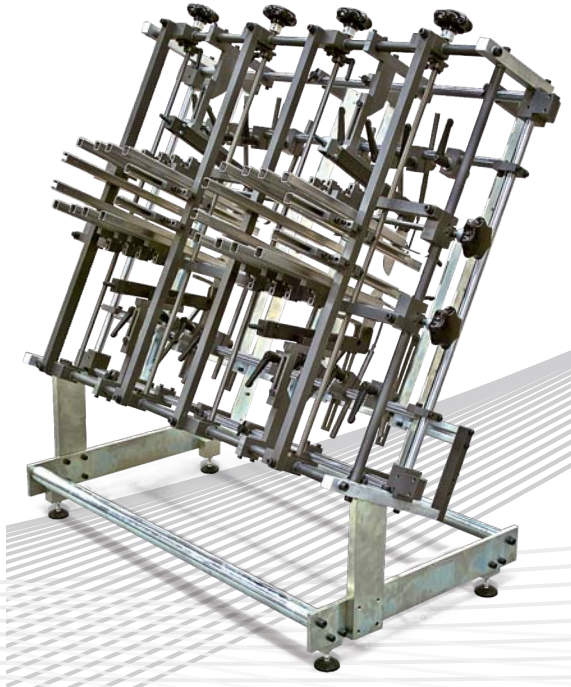


# CE 100



# OPTIONAL EQUIPMENT

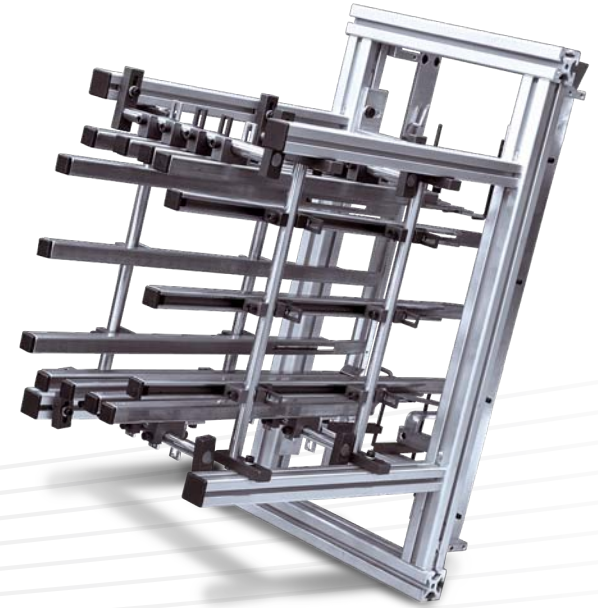
**ADDITIONAL FLEXTOWER WITH SPINDLE  
ADJUSTMENT**



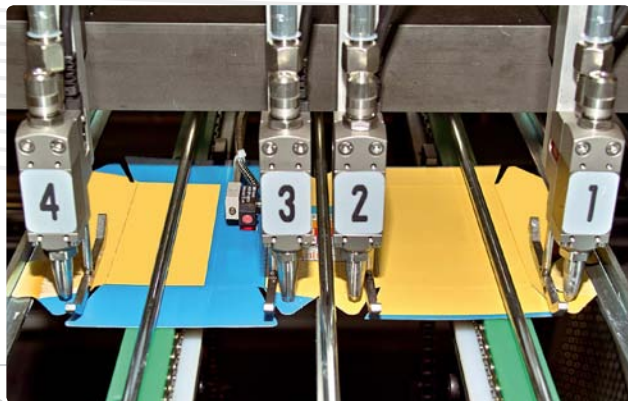
**PREPARATION JIG FOR OFF-MACHINE  
SET-UP OF NEW FORMATS**



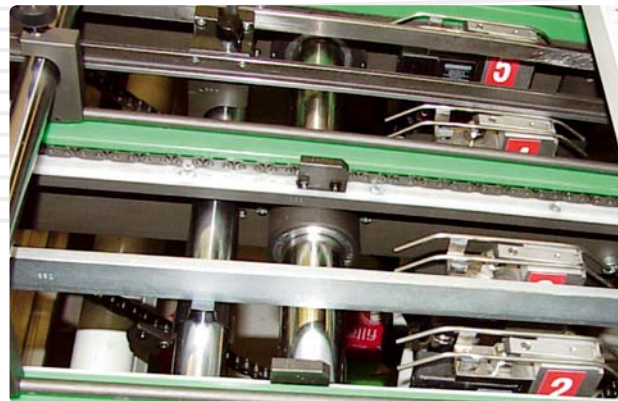
**PLUG-IN / PULL-OUT FIXTOWER**



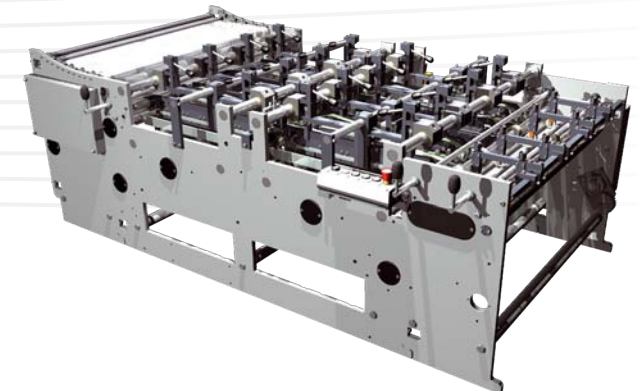
**TOP-MOUNTED GLUE GUN SYSTEM**



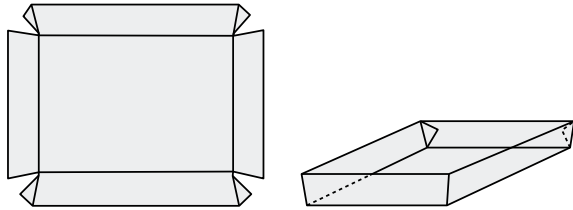
**BOTTOM-MOUNTED GLUE GUN SYSTEM**



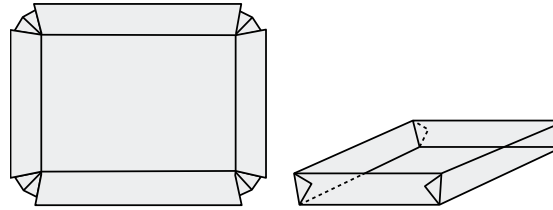
**DOUBLE LANE LENGTH FOLDING UNIT  
OFFERING UP TO 4 FOLDS**



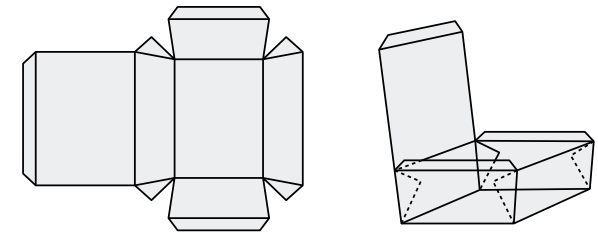
# THE CE 1000 PORTFOLIO



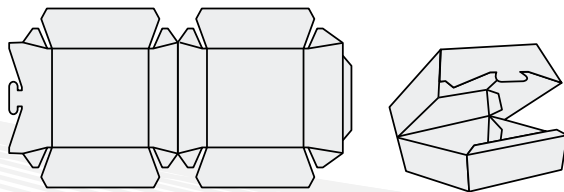
**4-CORNER TRAYS WITH GLUE  
FLAPS INSIDE/OUTSIDE**



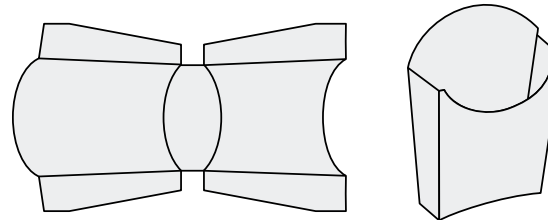
**LEAK-PROOF TRAYS  
INSIDE/OUTSIDE**



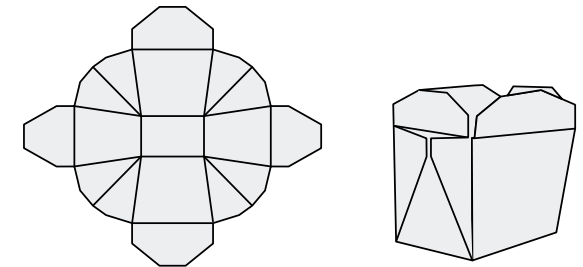
**TRAYS WITH LIDS**



**CLAM SHELL TRAYS**



**CHIP SCOOPS**

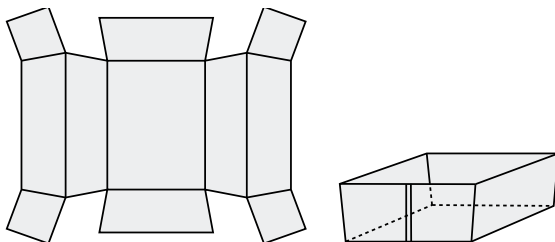


**TAKE-AWAY TRAYS (WEB EDGES)**

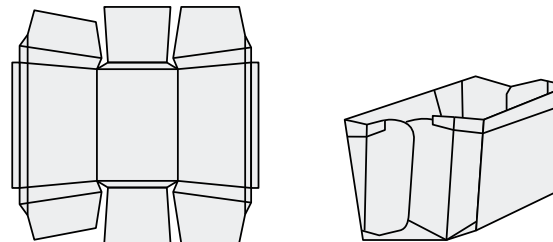
## OPTIONAL EQUIPMENT EXTENDS YOUR RANGE



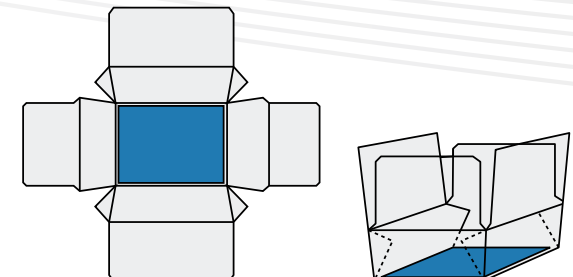
**NEW IDEAS**



**TRAYS WITH DOUBLE FOLD ON  
2 PARALLEL SIDES**



**TRAYS WITH FOLDING  
OF 2 SIDE FLAPS**



**TRAYS WITH INSERTED  
BOTTOM**

## TOWERS LANES FORMAT RANGE CE 1000

|  |            |   |                  |                   |
|--|------------|---|------------------|-------------------|
|  |            |   | 100 mm - 450 mm  | 4" - 17 3/4"      |
|  | Fix / Flex | 1 | 100 mm - 1000 mm | 4" - 39 3/8"      |
|  | Fix / Flex | 2 | 100 mm - 470 mm  | 4" - 18 1/2"      |
|  | Fix        | 3 | 100 mm - 290 mm  | 4" - 11 3/8"      |
|  | Fix        | 4 | 100 mm - 205 mm  | 4" - 8 1/8"       |
|  | Fix / Flex | 2 | 100 mm - 440 mm  | 4" - 17 1/4"      |
|  | Fix        | 3 | 100 mm - 250 mm  | 4" - 9 7/8"       |
|  | Fix        | 4 | 100 mm - 160 mm  | 4" - 6 1/4"       |
|  | Fix / Flex |   | 15 mm - 120 mm   | 5/8" - 4 3/4"     |
|  | Fix / Flex |   | 15 mm - 270 mm   | 5/8" - 10 5/8"    |
|  | Fix / Flex | 2 | 230 mm - 470 mm  | 9" - 18 1/2"      |
|  | Fix        | 3 | 230 mm - 290 mm  | 9" - 11 3/8"      |
|  | Fix / Flex |   | 20 mm - 60 mm    | 3/4" - 2 3/8"     |
|  | Fix / Flex |   | 80 mm - 250 mm * | 3 1/8" - 9 7/8" * |

V.20160520

**DEGREE OF TAPER** 5° - 40°  
**CARTON** 200 g/m<sup>2</sup> - 600 g/m<sup>2</sup>  
**CORRUGATED** Up to 1.5 mm

Technical data depending on quality and shape of blanks. Min. and / or max. indications may not be accommodated if they coincide in the same blank. Technical data subject to change.

**DIMENSIONS** (floor space)  
**Length 4.400 mm Width 2.000 mm**

\* up to 300 mm / 11 3/4"



# WHERE MASS PRODUCTION MEETS PRECISION

## **1 TO 6 LANE PRODUCTION**

- up to 72,000 perfectly formed trays every hour

## **GLUE APPLICATION USING BOTTOM OR TOP MOUNTED GLUE GUNS**

- unlimited flexibility

## **PROCESSOR CONTROLLED BLANK FEEDER WITH TEACH-IN FUNCTION**

- quick and easy set-up using a single blank

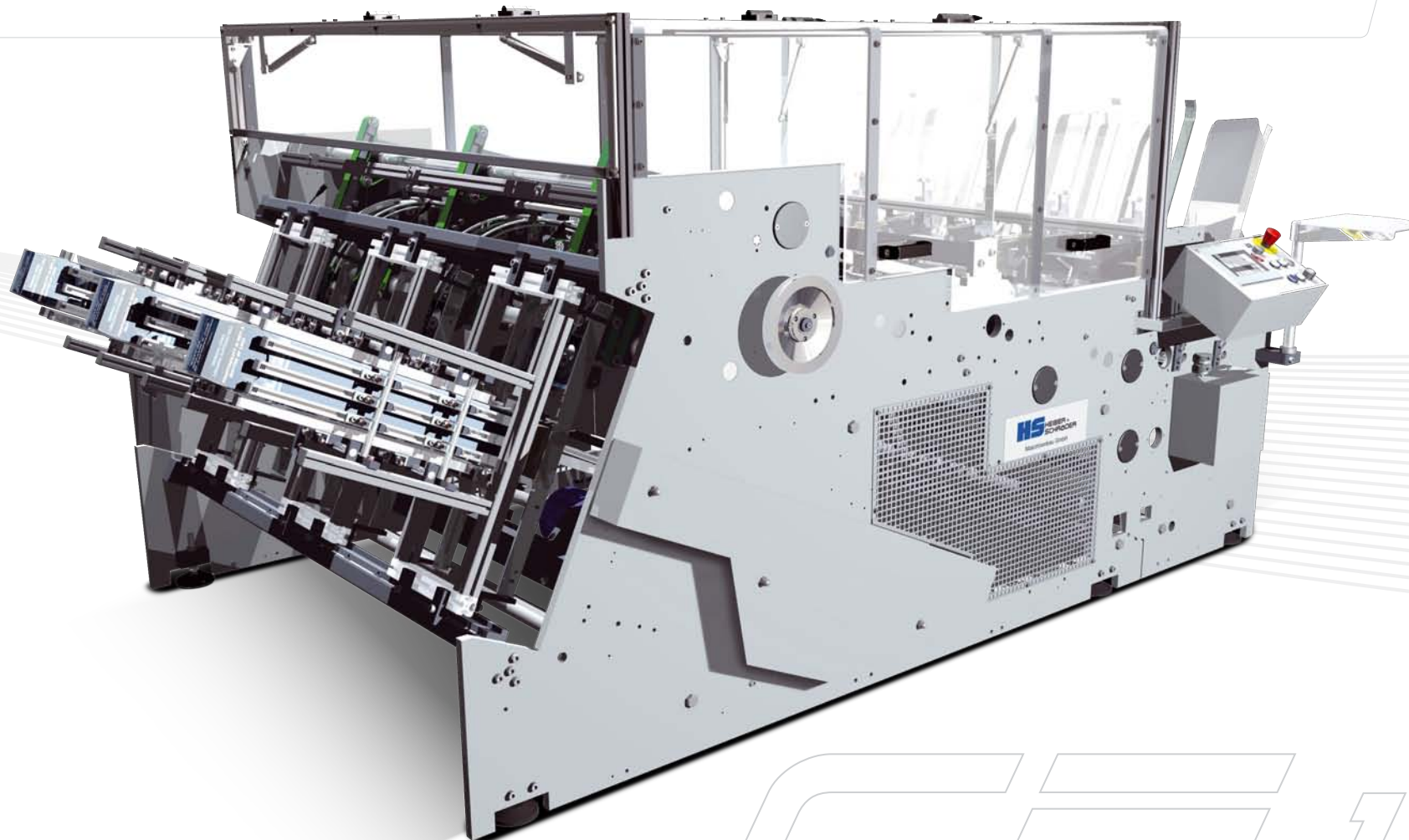
## **PLUG-IN/PULL-OUT FIXTURES**

- shorter changeovers and reduced waste

## **PERFECT, SERVO-DRIVEN, PUSHER MOTION, READY PROGRAMMED FOR VARIOUS TRAY STYLES AND FORMATS**

- higher output, better product quality and reduced waste

## **SET-UP DATA STORAGE**



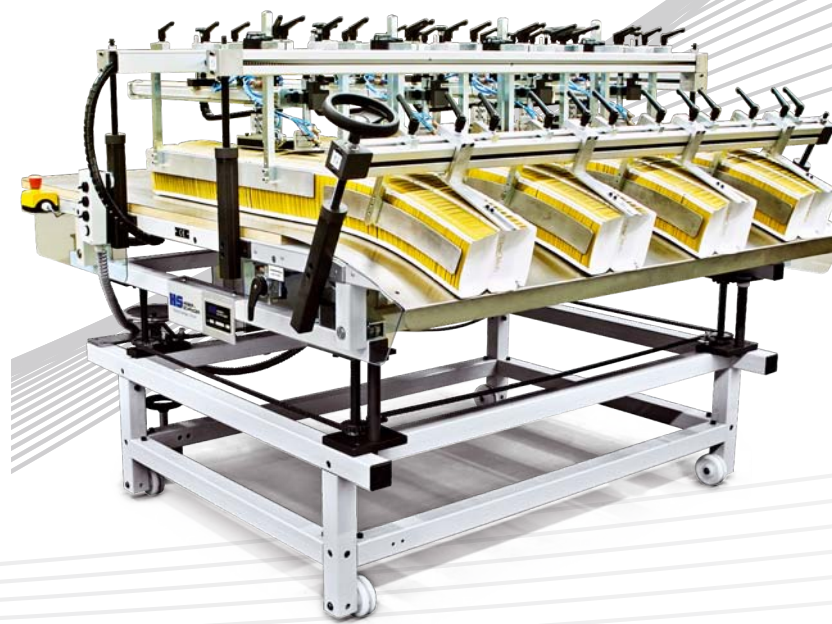
CEE 15

# OPTIONAL EQUIPMENT

**BOTTOM-MOUNTED GLUE GUN SYSTEM** (clam shells)



**BATCH COUNTING AND SEPARATING UNIT FOR CLAM SHELL TRAYS**



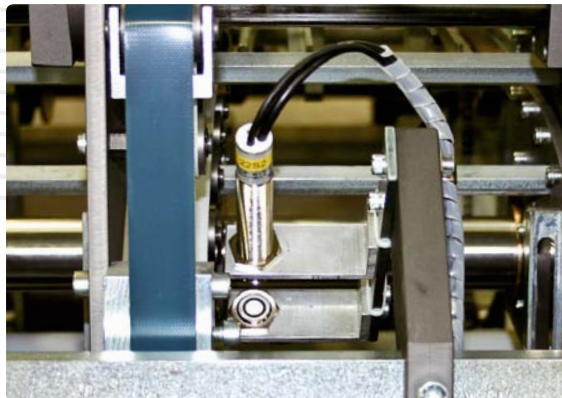
**BATCH COUNTING AND SEPARATING UNIT FOR CHIP SCOOPS**



**SERVO CONTROLLED OSCILLATING MOVEMENT FOR TOP-MOUNTED GLUE GUNS** (for chip scoops)



**DOUBLE SHEET DETECTOR** (can be combined with marking device or automatic ejector)



**PIN MARKER**




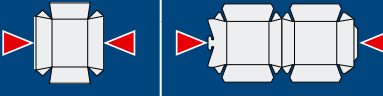
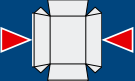

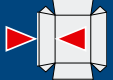
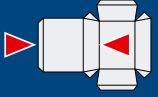
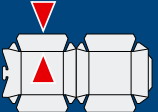
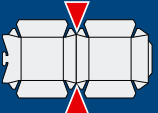
**AUTO-FILL SYSTEM FOR GLUE POTS**





## LANES

## FORMAT RANGE

|   |   |        |                 |    |                  |
|---|---|--------|-----------------|----|------------------|
|    |   |        | 100 mm - 450 mm |    | 4" - 17 3/4"     |
|    | 2 | 100 mm | 230 mm - 750 mm | 4" | 9" - 29 1/2"     |
|   | 3 | 100 mm | 230 mm - 480 mm | 4" | 9" - 18 7/8"     |
|   | 4 | 100 mm | 230 mm - 345 mm | 4" | 9" - 13 5/8"     |
|    | 5 |        | 100 mm - 260 mm |    | 4" - 10 1/4"     |
|   | 6 |        | 100 mm - 210 mm |    | 4" - 8 1/4"      |
|    | 2 |        | 100 mm - 720 mm |    | 4" - 28 3/8"     |
|   | 3 |        | 100 mm - 440 mm |    | 4" - 17 3/8"     |
|   | 4 |        | 100 mm - 300 mm |    | 4" - 11 3/4"     |
|   | 5 |        | 100 mm - 215 mm |    | 4" - 8 1/2"      |
|   | 6 |        | 100 mm - 160 mm |    | 4" - 6 1/4"      |
|    |   |        | 15 mm - 120 mm  |    | 5/8" - 4 3/4"    |
|   |   |        | 15 mm - 270 mm  |    | 5/8" - 10 5/8"   |
|  |   |        | 20 mm - 60 mm   |    | 3/4" - 2 3/8"    |
|  |   |        | 80 mm - 250 mm* |    | 3 1/8" - 9 7/8"* |

V.20160520

**DEGREE OF TAPER** 5° - 40°

**CARTON** 200 g/m<sup>2</sup> - 600 g/m<sup>2</sup>

**CORRUGATED** Up to 1.5 mm

Technical data depending on quality and shape of blanks. Min. and / or max. indications may not be accommodated if they coincide in the same blank. Technical data subject to change.

**DIMENSIONS** (floor space)

**Length** 4.400 mm **Width** 2.600 mm

### OUR MANUFACTURING PROGRAM

- Window patching and lining machines
- Carton erecting machines
- Pick-and-place machines
- Pre-feeders
- Automatic stackers
- Special machines for carton and foil handling
- Transportation units for blank piles

\* up to 300 mm / 11 3/4"

**HEIBER + SCHRÖDER**

Maschinenbau GmbH

Feldheider Straße 52

Fax: +49 (2104) 3 57 49

40699 Erkrath - Germany

info@heiber-schroeder.com

Tel: +49 (2104) 93 76-0

www.heiber-schroeder.com

**HS HEIBER + SCHRÖDER**