

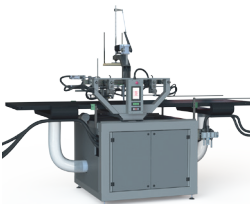
every step matters to achieve the

Perfect Box



Perfect Gluing

The new gluer adopted on the **S line** makes identically glued sheets with precise output position.
Gluing is not an issue anymore.



Exact Spotting

Increased precision in box centering and positioning consistency. Newly developed electronics and an even more refined mechanics.



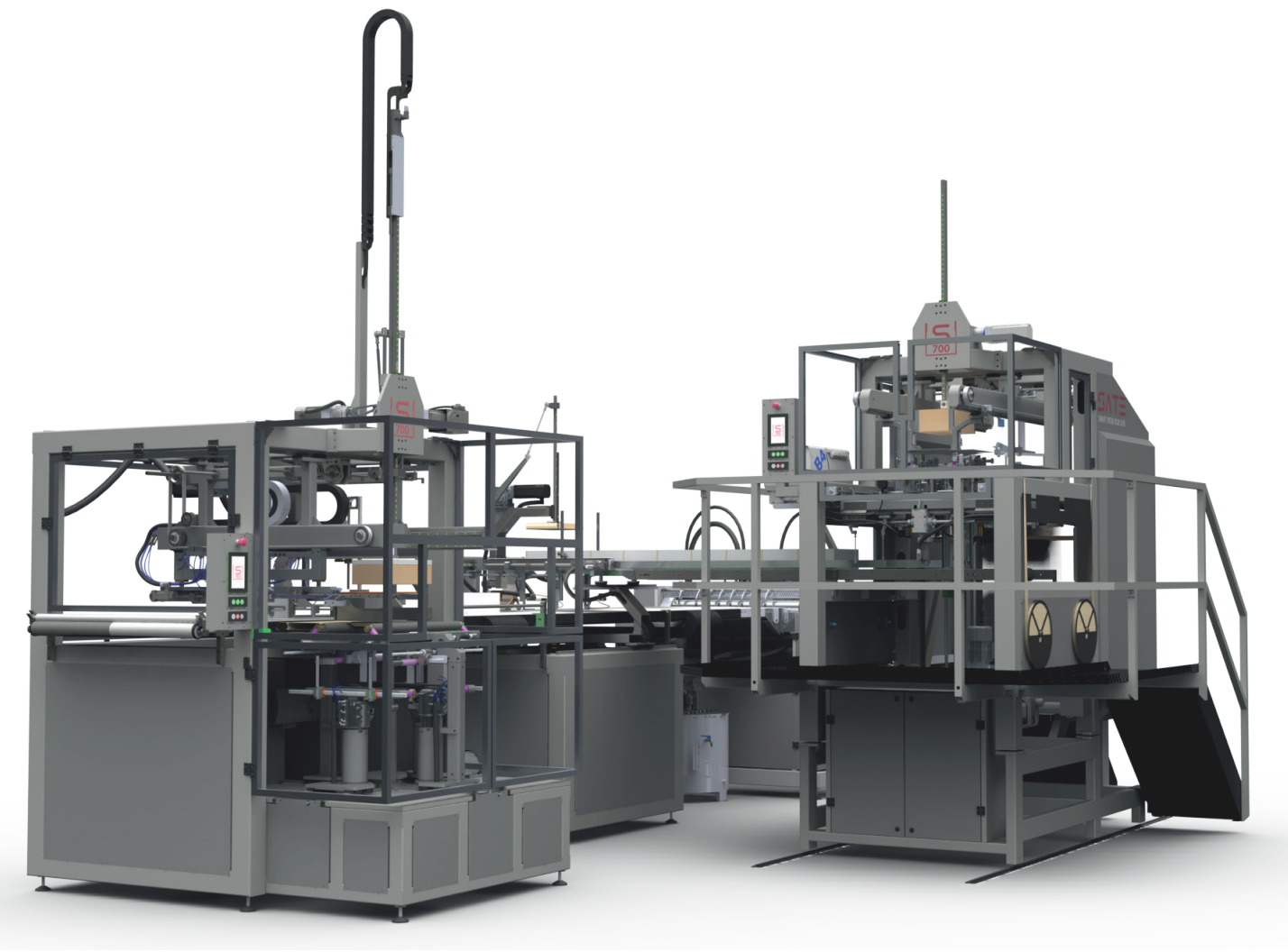
Strong Box Quadstayer

The new quadstayer installed on the **S line** is minimal, functional, more precise and quicker than ever: the heart of the **S line** is here to surprise.



Tailored Wrapping

With the **S line** wrapper you can cover any type of box according to the various market requests.
Simple, fast and easy to use, this machine is smart and precise.



www.sate.eu

sales@sate.eu

+39 0573 51045

SATE

A SANTINI GROUP COMPANY

SATE
A SANTINI GROUP COMPANY

SATE s.r.l.
via Quattro Querci 7
Serravalle Pistoiese, Italy

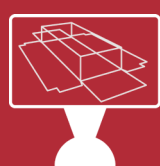
the **S line** models can provide a large number of assets for your business



saves



quality



traces
generator



custom kits



simple



service
assistance

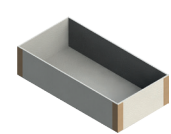


value over
time

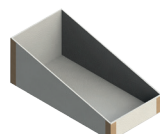


the Framework

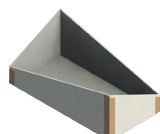
from the **BIGGEST** box to the smallest one in the blink of an eye!



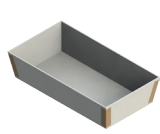
X [normal]



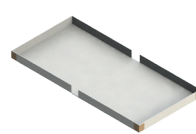
X [2 heights]



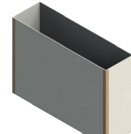
X [4 heights]



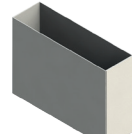
X [trapezoidal¹⁾



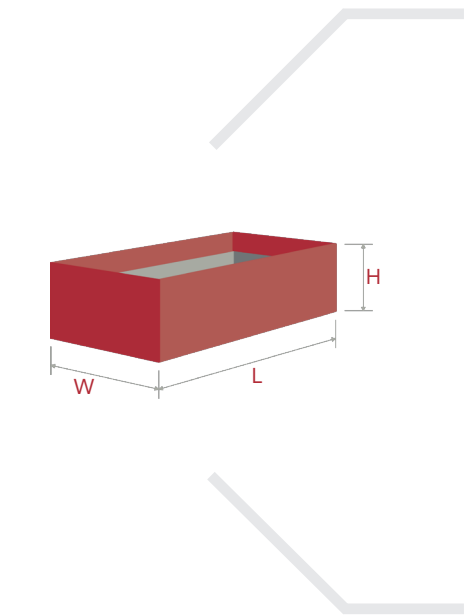
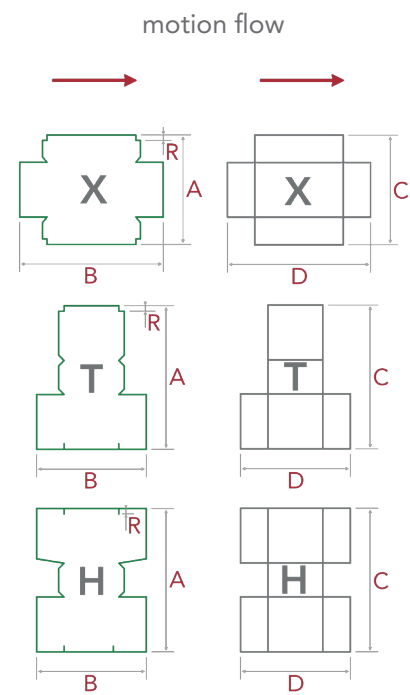
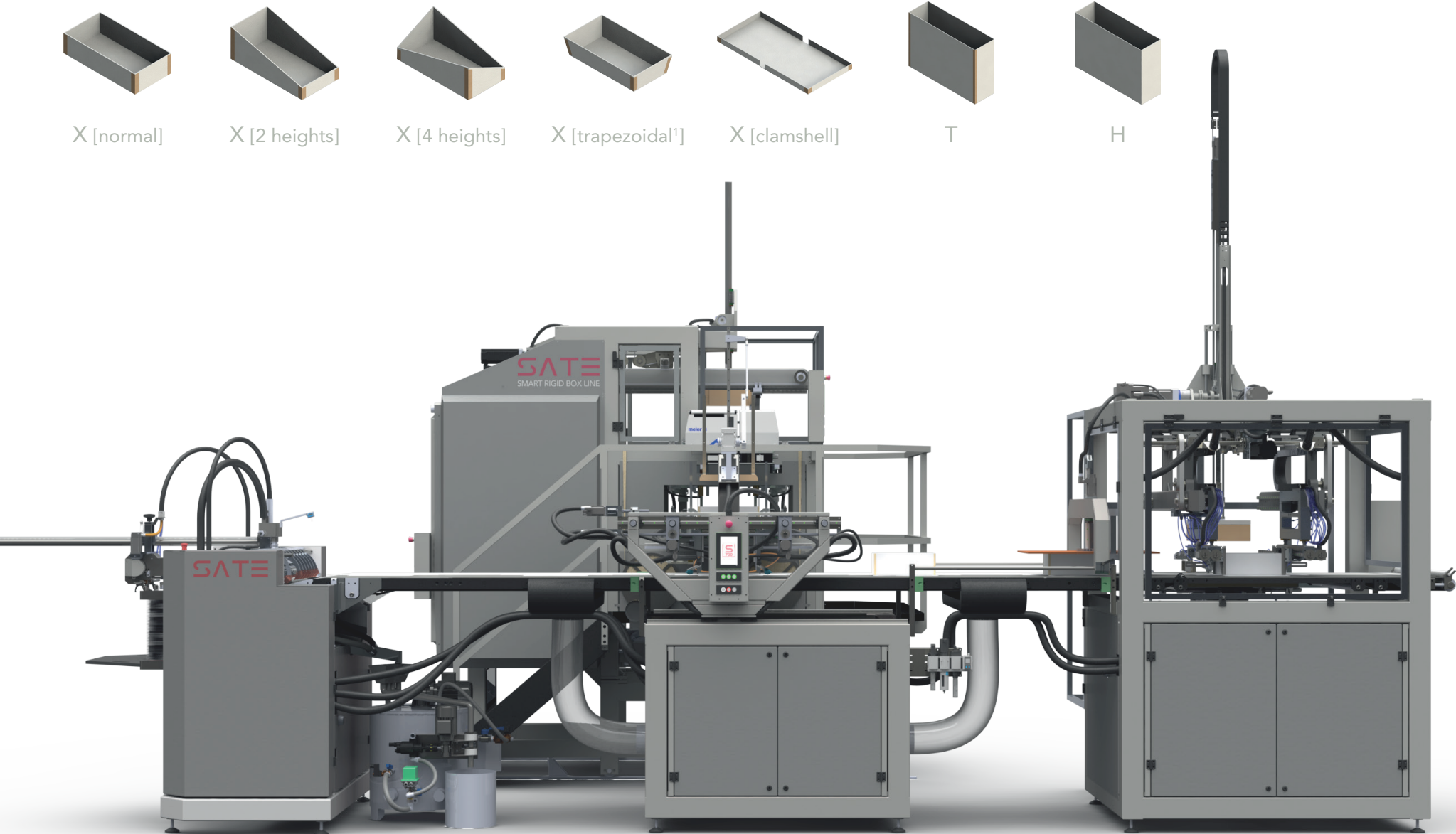
X [clamshell]



T



H



S
700

S
500

dimension		min	max	max
A		70 mm (2 3/4")	1070 mm (42 1/8")	520 mm (20 15/32")
B		120 mm (4 23/32")	1270 mm (50")	870 mm (34 1/4")
R		5 mm (0 13/64")	100 mm (3 15/16")	100 mm (3 15/16")
weight		70 g/m ²	350 g/m ²	350 g/m ²
pile height		-	800 mm (31 1/2")	800 mm (31 1/2")
C		60 mm (2 23/64")	1000 mm (39 3/8")	510 mm (20 5/64")
D		60 mm (2 23/64")	1200 mm (47 1/4")	800 mm (31 1/2")
thickness		0,7 mm (0 1/32")	6 mm (0 15/64")	6 mm (0 15/64")
pile height		-	1500 mm (59 1/16")	1500 mm (59 1/16")
stay tape		up to	35 cycles/min	40 cycles/min
X	L	40 mm (1 37/64")	700 mm (27 9/16")	500 mm (19 11/16")
	W	40 mm (1 37/64")	500 mm (19 11/16")	350 mm (13 25/32")
	H	10 mm (0 25/64")	250 mm (9 27/32")	150 mm (5 29/32")
stay tape		up to	24 cycles/min	27 cycles/min
T	L	40 mm (1 37/64")	700 mm (27 9/16")	500 mm (19 11/16")
	W	40 mm (1 37/64")	200 mm (7 7/8")	100 mm (3 15/16")
	H	50 mm (1 31/32")	250 mm (9 27/32")	150 mm (5 29/32")
hot melt		up to	22 cycles/min	25 cycles/min
H	L	40 mm (1 37/64")	700 mm (27 9/16")	500 mm (19 11/16")
	W	40 mm (1 37/64")	200 mm (7 7/8")	100 mm (3 15/16")
	H	50 mm (1 31/32")	250 mm (9 27/32")	150 mm (5 29/32")
length			8280 mm (~27 ft)	7780mm (~25 ft)
width			5020 mm (~16 ft)	4520 mm (~14 ft)
height			4800 mm (~15 ft)	4800 mm (~15 ft)
net weight			10500 kg (23148 lb)	8500 kg (18739 lb)
spotter accuracy ²		0,04 mm	glue tank capacity	901 (23 U.S. gal)
format change time ³		20 min with 1 op.	power absorption	12,5 kW (40kW installed)
starting time		10 minutes	air consumption	175 l/min

Production schedules and efficiency are maximized to meet each clients need depending (and not limited to): type and specifications of materials used, personnel training and size of the product being processed. Technical information herein may be changed or updated without any notice. Verify that they coincide with those on sate.eu

The S line and each related machine are patented and protected by the applicable relevant international laws. Every unauthorized use of the informations inside this booklet will be prosecuted.

1. To produce the "Trapezoidal box" ask SATE for the kit needed. For optional accessories visit sate.eu/extras
2. Maximum repeatability error on spotter period.
3. Time needed may change depending on the size chosen, training level and the number of the operators.